

Dreamweaver
Patrick.j.rice@gmail.com

What is Dreamweaver

- Macromedia Dreamweaver is a professional HTML editor for visually designing and managing Web sites and pages.
- Whether you enjoy the control of hand-coding HTML or prefer to work in a visual editing environment.
- Dreamweaver makes it easy to get started and provides you with helpful tools to enhance your Web design experience.

What is understood

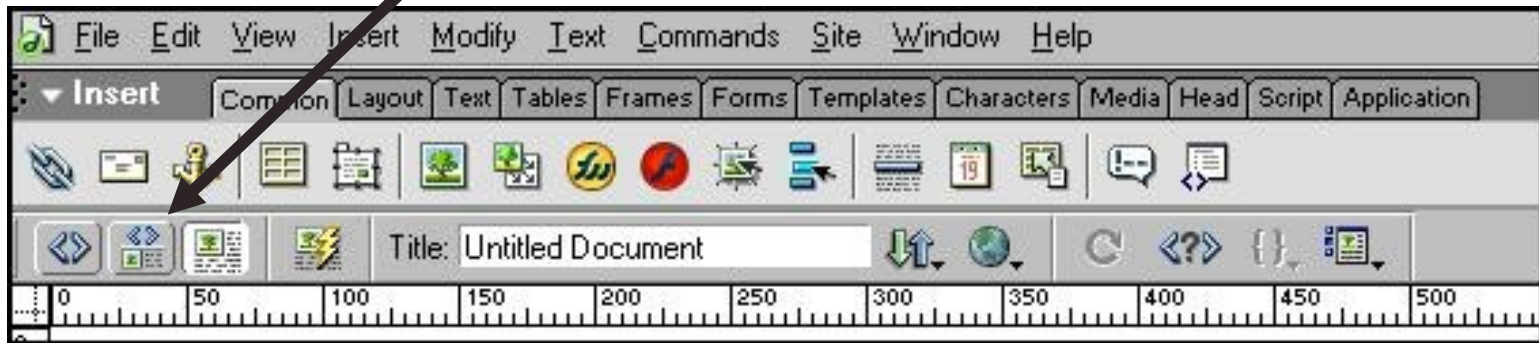
- HTML, CSS, and JavaScript reference, a JavaScript Debugger, and code editors that allow you to edit JavaScript, XML, and other text documents directly in Dreamweaver.
- Macromedia's Roundtrip HTML technology imports HTML documents without reformatting the code.

Where is Dreamweaver

Open **Macromedia** > **Dreamweaver MX**

Exploring Dreamweaver

- Click on Common tab and look for:
 - Design and code views (press all 3 buttons and see what happens)



Note the familiar HTML code – this is how you can edit it – in code view

Locate Context Sensitive Property Inspector at Bottom

- This is where you will enter links and make text, tables and other things do what you want them to

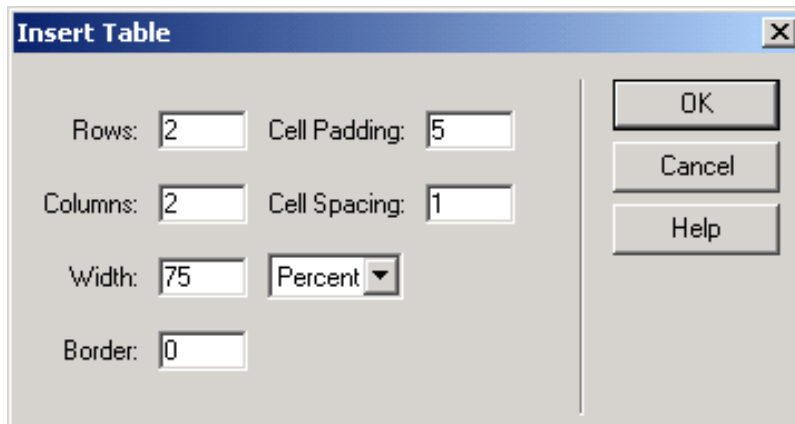


Just write something

- Dreamweaver is what you see is what you get
- So anything that you type on screen will be on your webpage
- This works “most of the time”

Create a Table

- Create a new page **File** → **New**. Then **Basic Page, HTML** and hit **Create**.
- Choose **Insert** → **Table** and complete the pop-up form as below

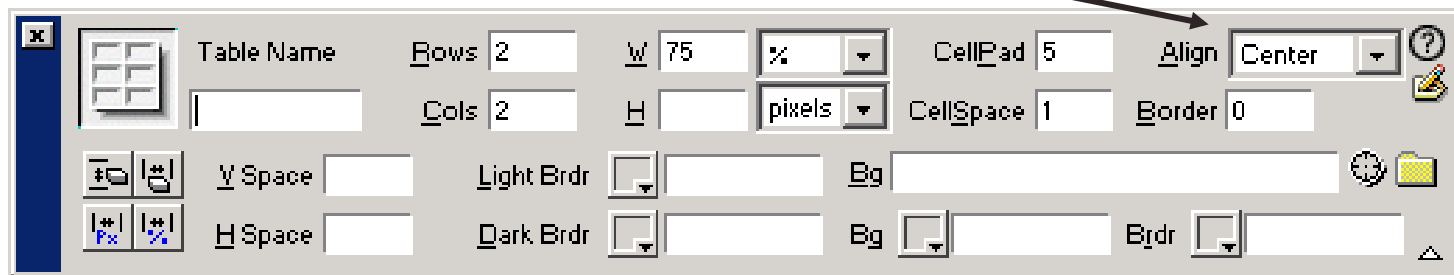


Note: you can also insert a table from menu bar (look for icon right under “common” tab)

HTML: `<table width=75% cellpadding=5 cellspacing=1 borders=0>`

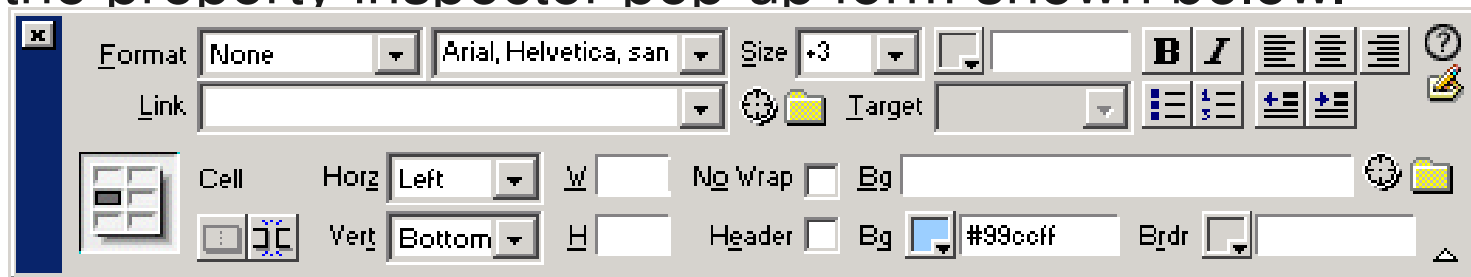
Center the Table

- With your cursor **inside** the table, click the **<table>** tag at the bottom of the **Untitled Document** window.
- Set **Align: Center** in the property inspector pop-up form shown below:



Font Face/Size

- **Highlight ACME Video Enterprises** and complete the property inspector pop-up form shown below.



- Change font face to **Arial, Helvetica, sans serif**
- Change the font size to **Size: +3**.
- Highlight text in **each** content cell and change the font face to **Arial, Helvetica, sans serif**.

HTML:

Test by hitting f12

Linking the Pages

- **Highlight** Line test.
- In the Property Inspector, click the little yellow folder to the right of the Link field to browse for line.htm. Click **OK**.
- Repeat the procedure for Font test this time browsing for font.htm (they should both be in the same dreamweaver_exercise folder).
- This is relative linking
- **Save** the file and **test** the links locally in IE

HTML:

