

What your pc sees as hardware

Patrick.j.rice



Rice, Patrick



Internet
Mozilla Firefox



E-mail
Microsoft Office Outlook



Shortcut to Flash



Notepad



iTunes



PowerDirector Express



VTK



Nokia Maps Updater



Nokia PC Suite

All Programs



My Documents



My Recent Documents ▶



My Pictures



My Music



My Computer



My Network Places



Control Panel



Set Program Access and
Defaults



Connect To ▶



Printers and Faxes



Help and Support



Search



Run...



Undock Computer



Log Off



Shut Down

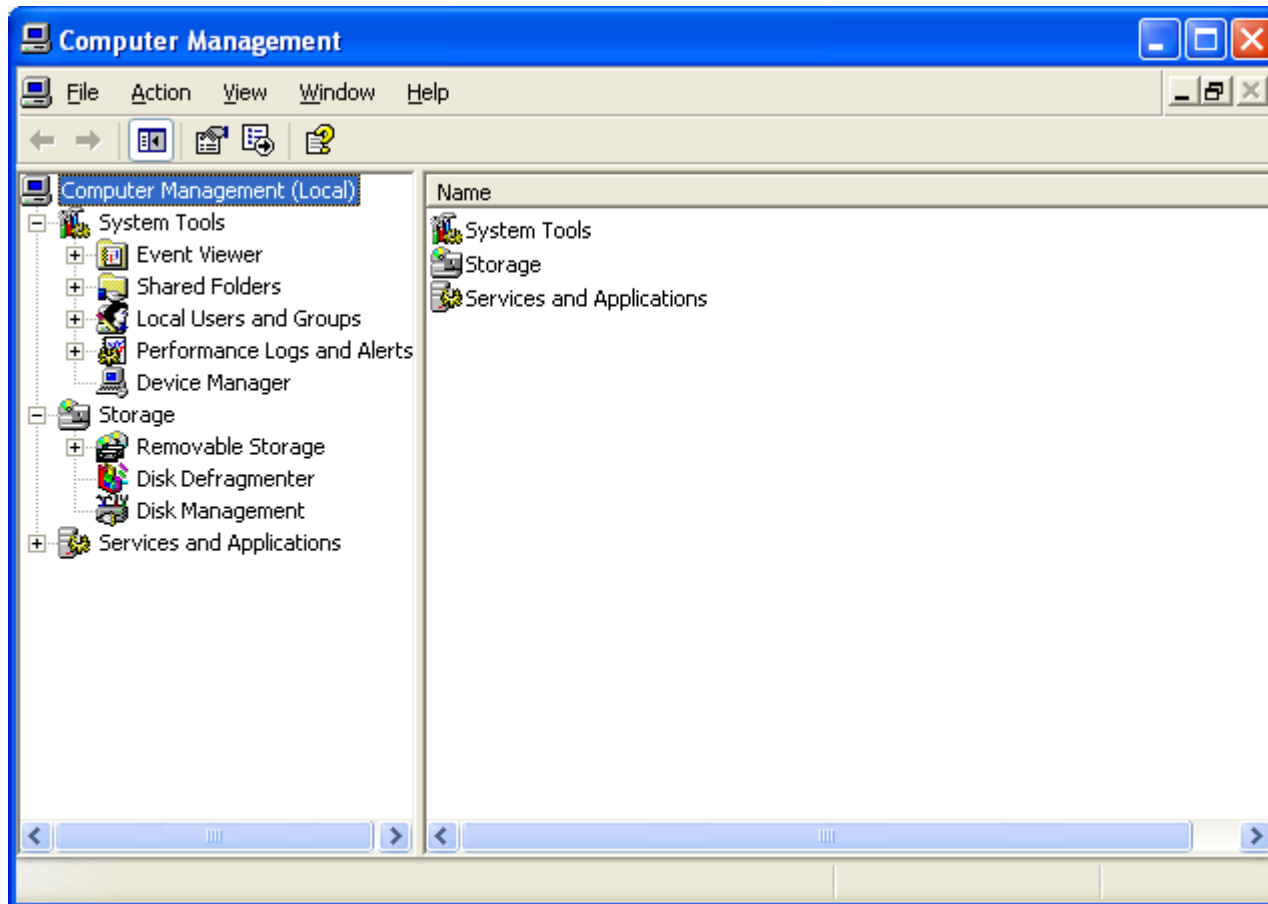
start

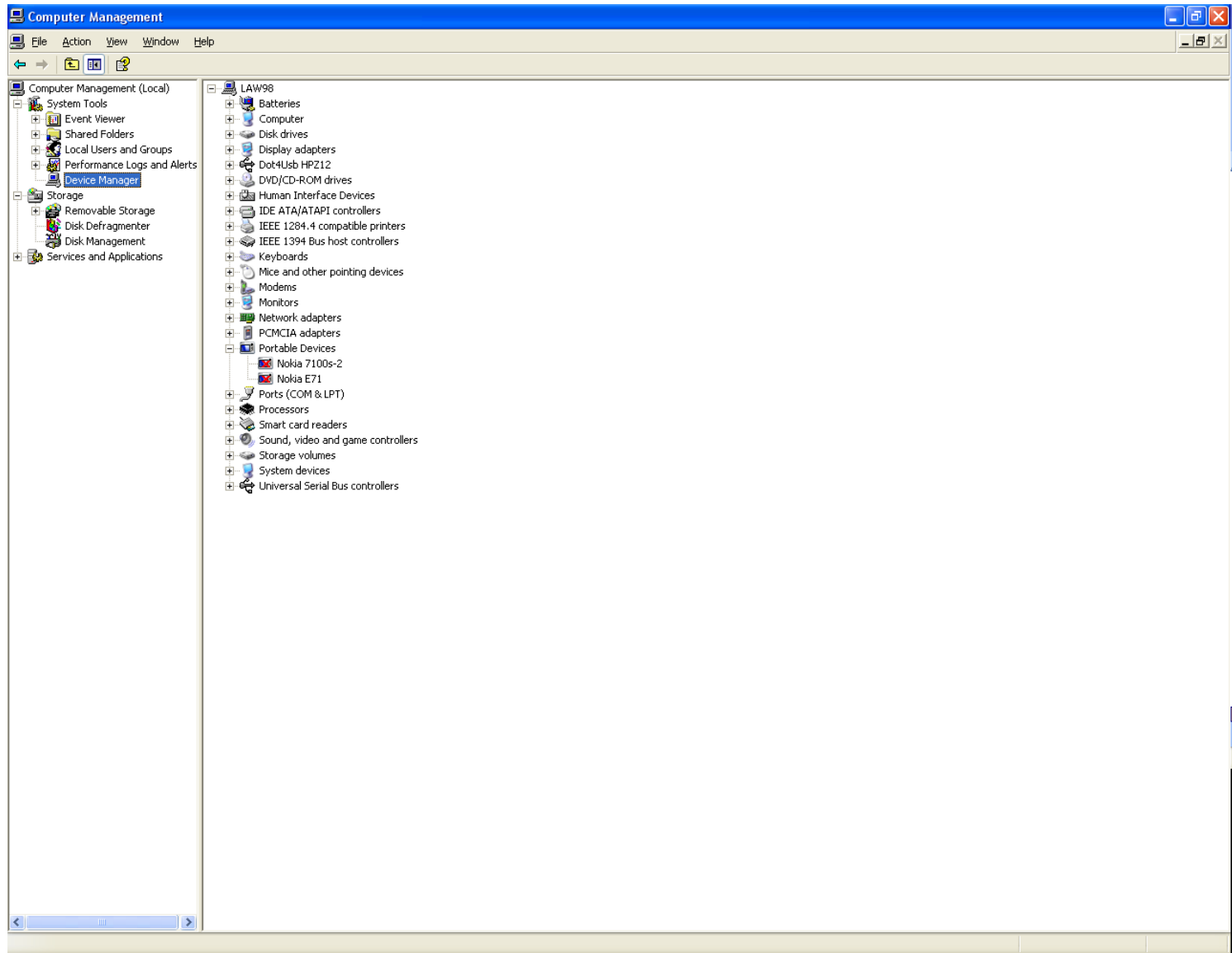


2 Microsoft...

iTunes







There is always another way

Rice, Patrick



Internet
Mozilla Firefox



E-mail
Microsoft Office Outlook



Shortcut to Flash



Notepad



iTunes



PowerDirector Express



VTK



Nokia Maps Updater



Nokia PC Suite

All Programs



My Documents



My Recent Documents ▶



My Pictures



My Music



My Computer



My Network Places



Control Panel



Set Program Defaults
Provides options for you to set the default programs for your computer, add or remove accounts.



Connect To



Printers and Faxes



Help and Support



Search



Run...



Undock Computer



Log Off

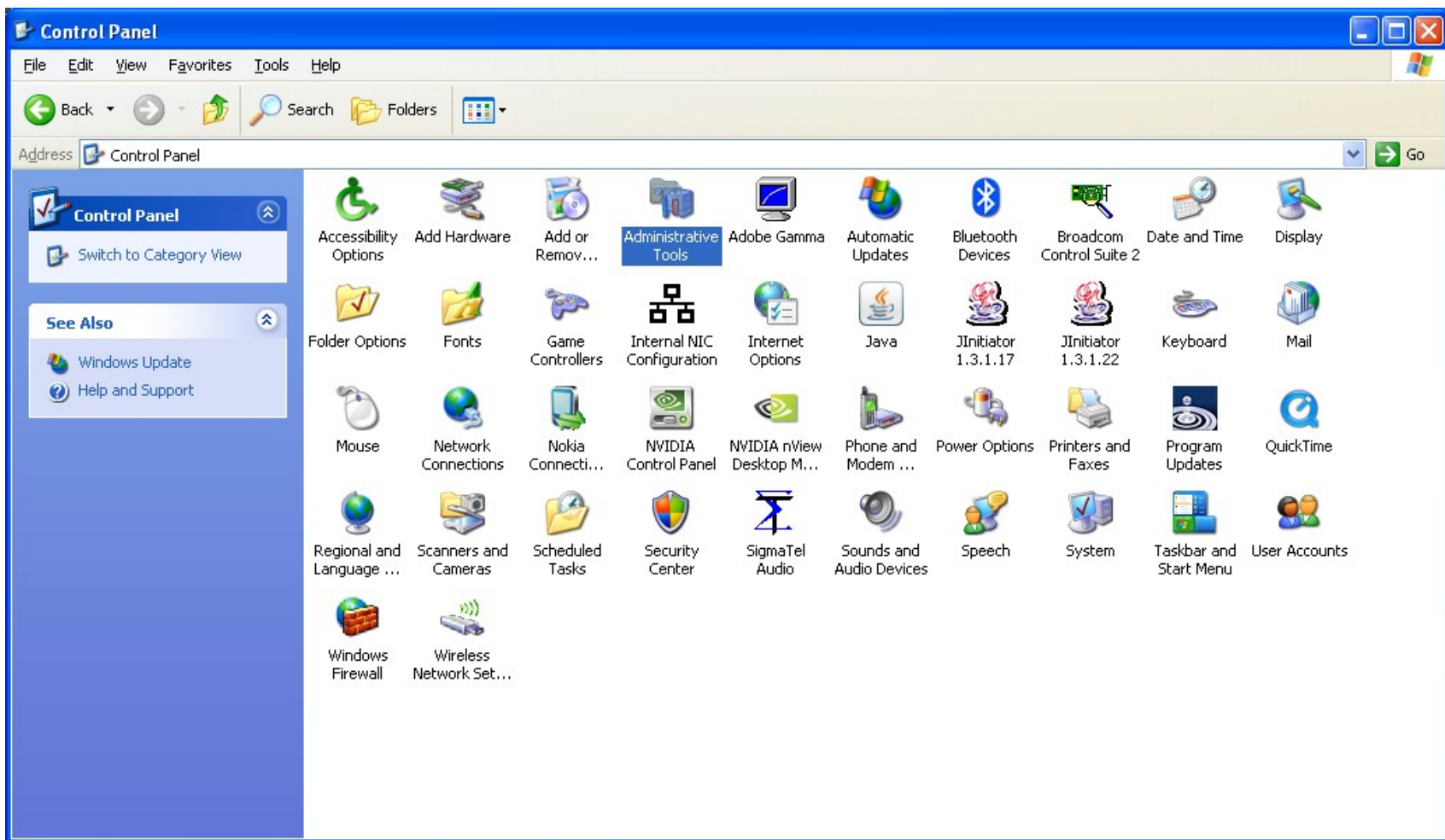


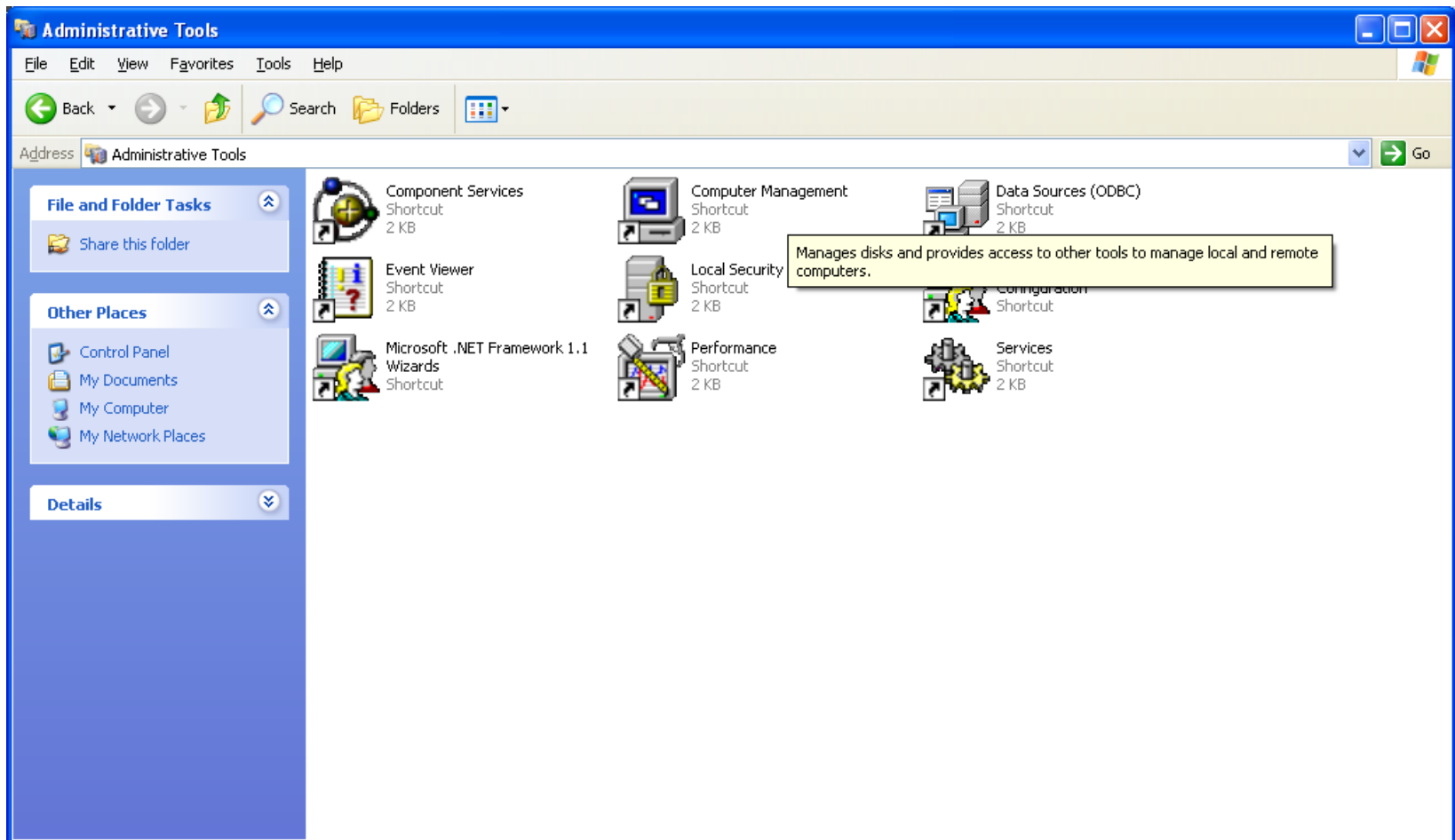
Shut Down



start

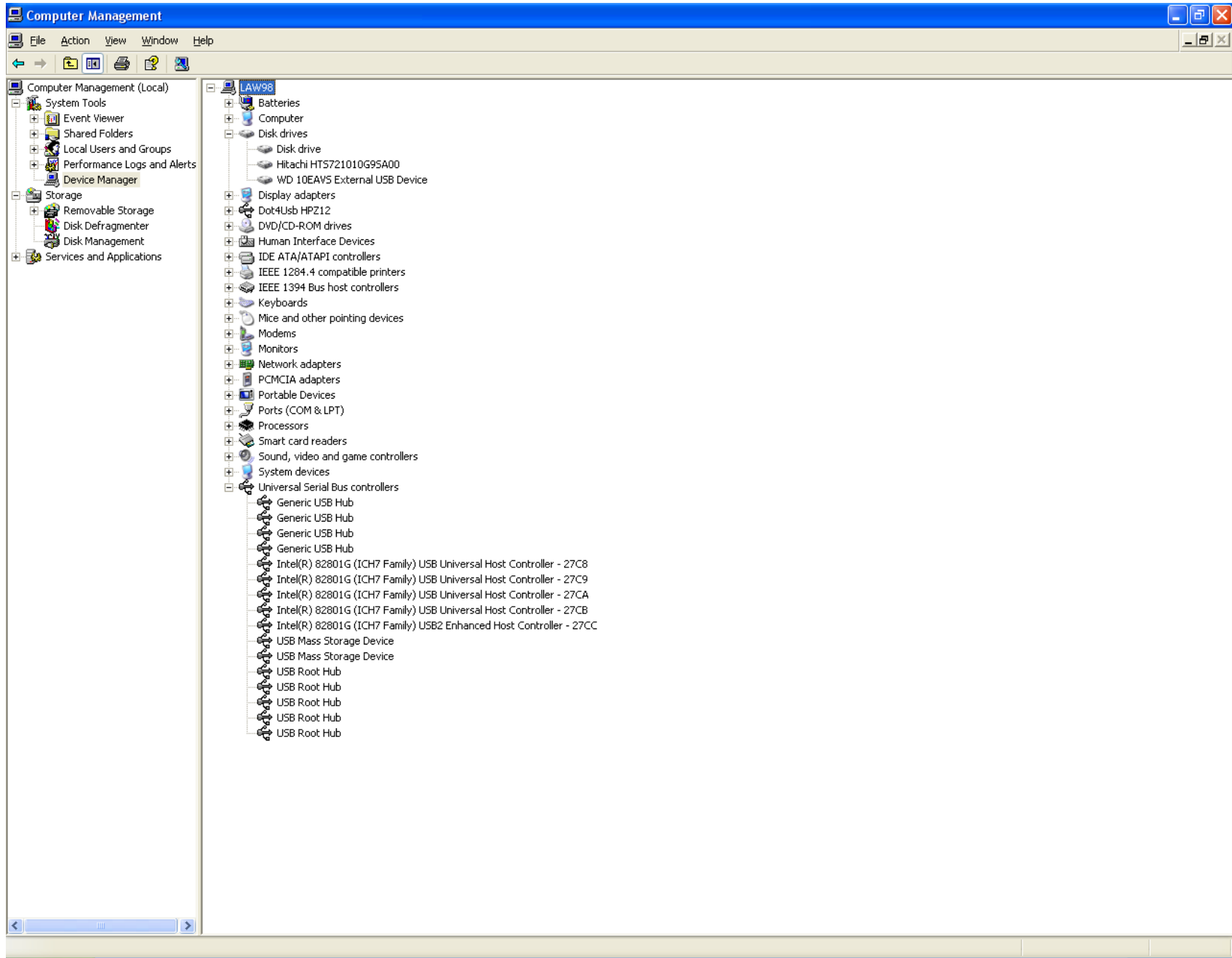




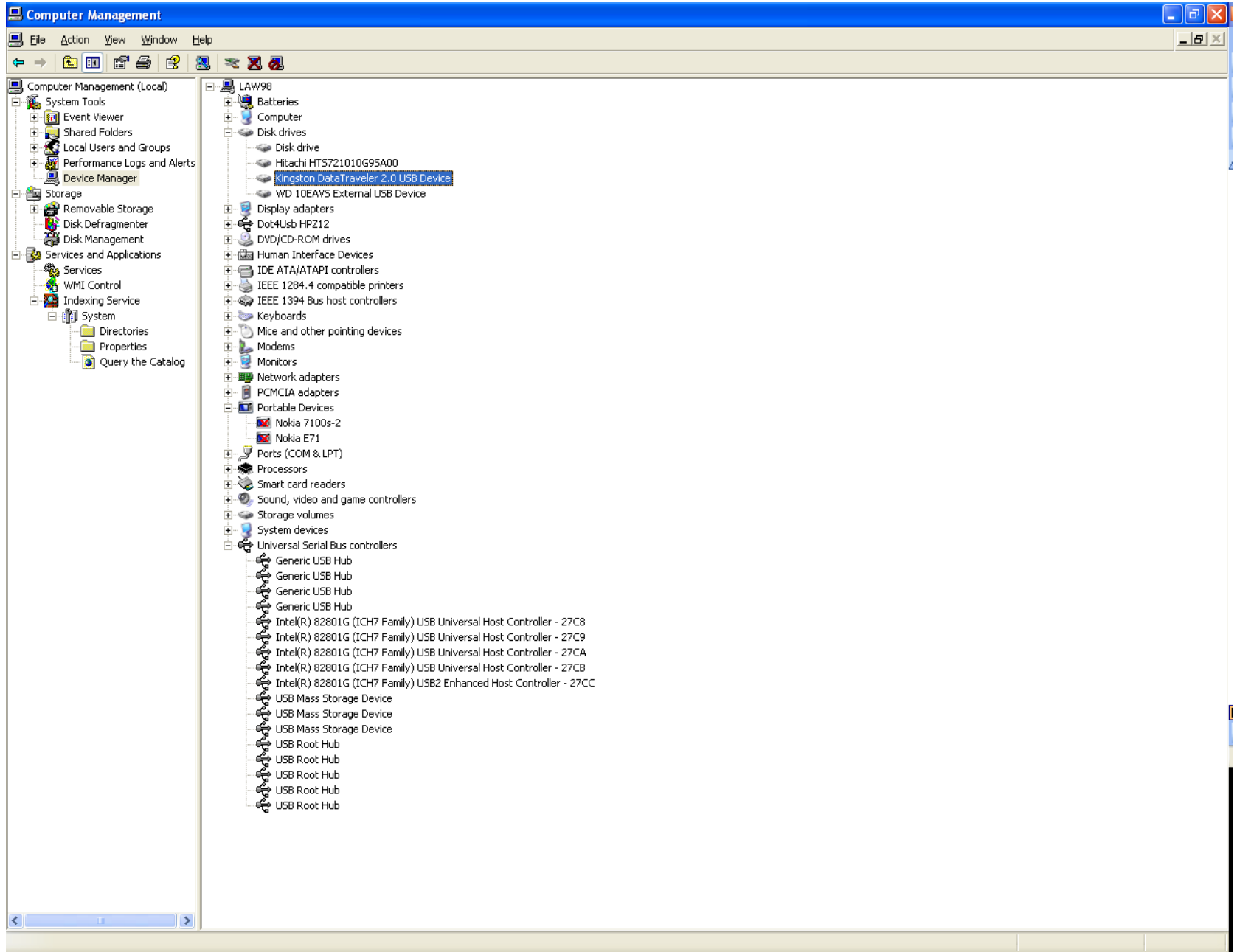


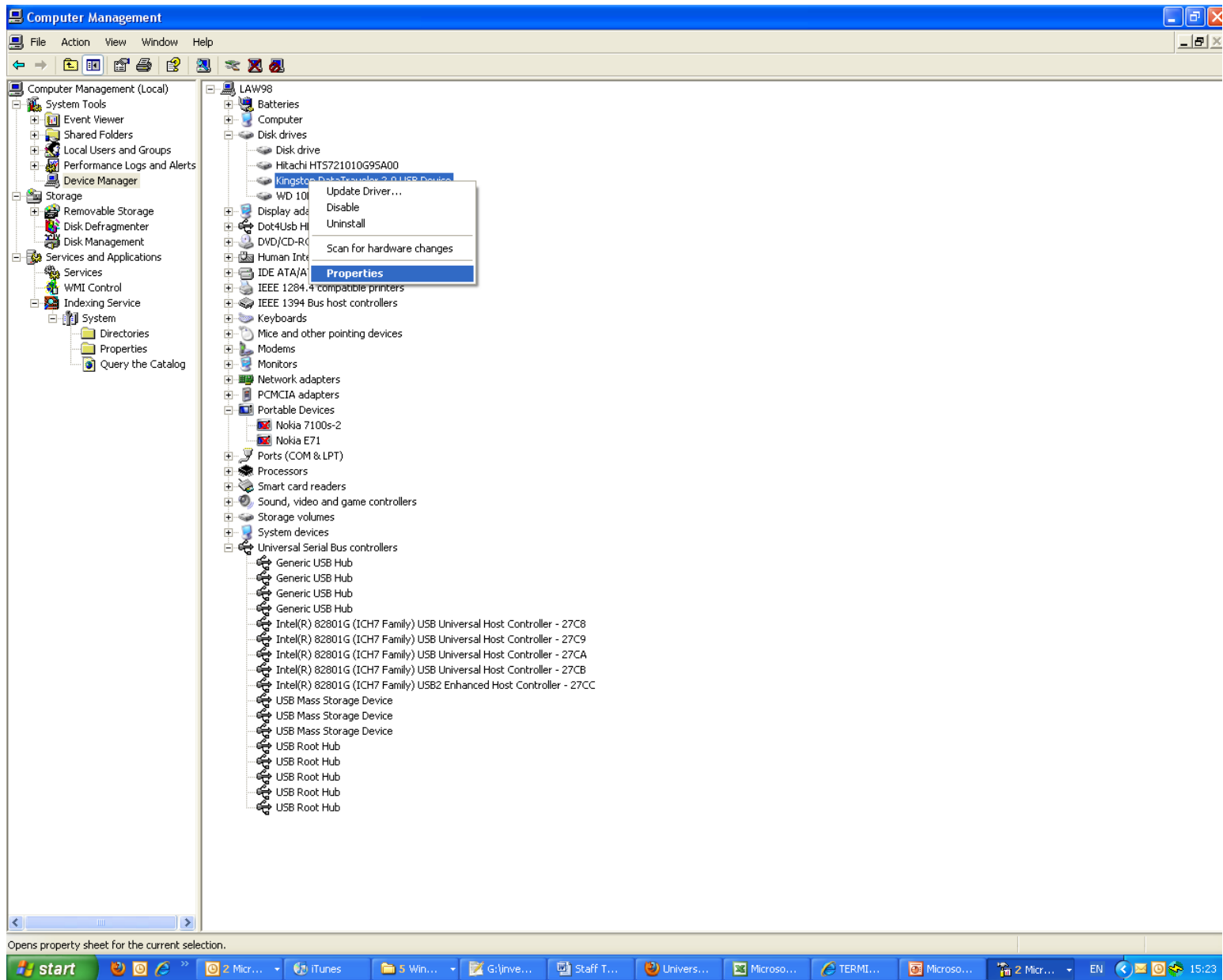
The humble USB stick

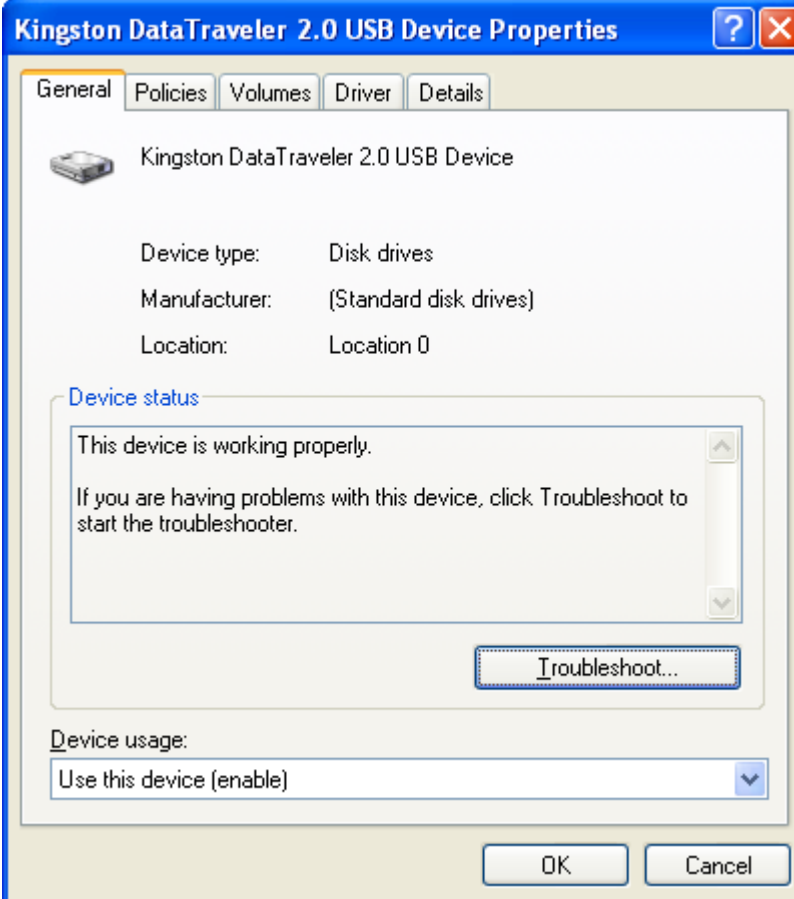
Take 1 USB stick

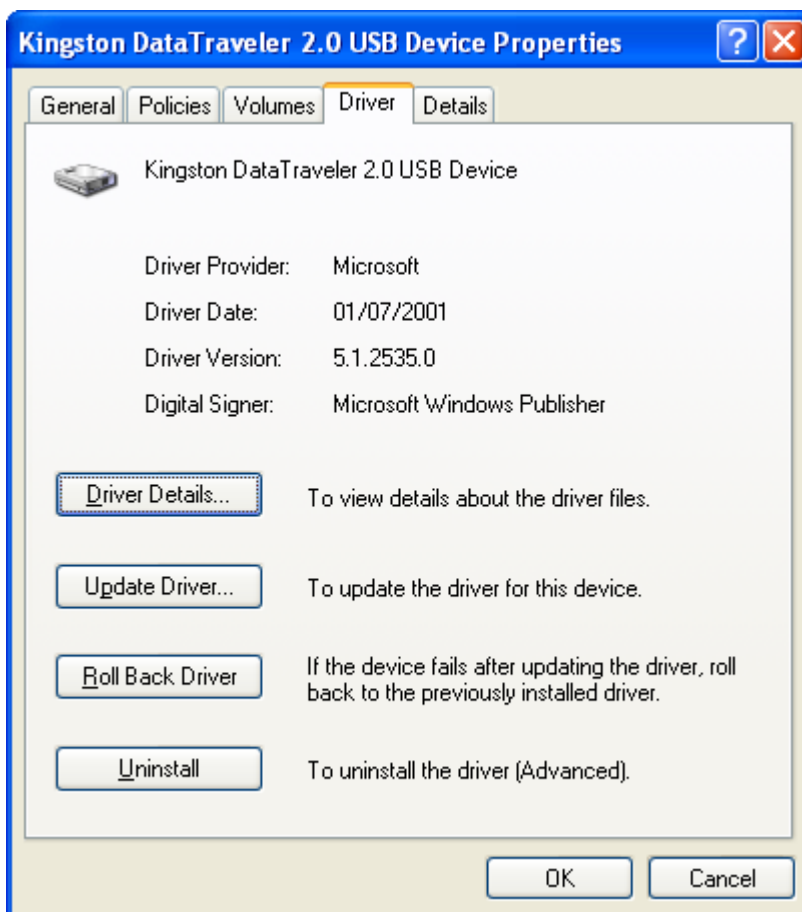


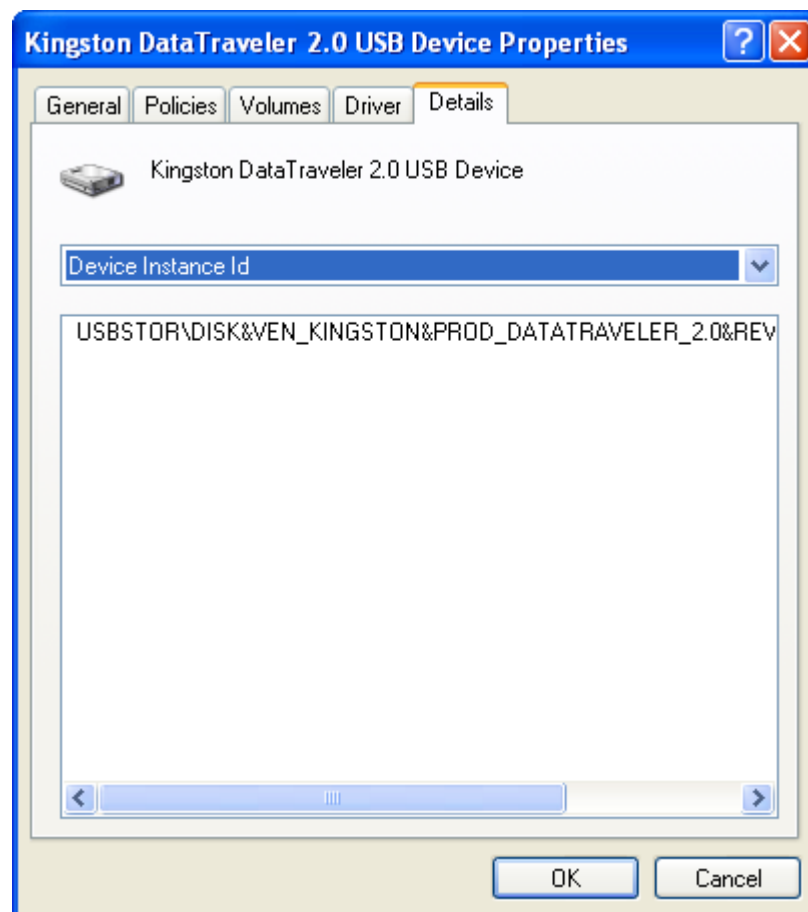
Now plug it in











What's in my computer

Rice, Patrick



Internet
Mozilla Firefox



E-mail
Microsoft Office Outlook



Shortcut to Flash



Notepad



iTunes



PowerDirector Express



VTK



Nokia Maps Updater



Nokia PC Suite

All Programs



My Documents



My Recent Documents ▶



My Pictures



My Music



My Computer



My Network Places



Control Panel



Set Program Access and
Defaults



Connect To ▶



Printers and Faxes



Help and Support



Search



Run...



Undock Computer



Log Off

Opens a program, folder, or file

start



2 M..



iTunes



5

Run



Type the name of a program, folder, document, or Internet resource, and Windows will open it for you.

Open:

msinfo32



OK

Cancel

Browse...

System Information

FileEditViewToolsHelp

System Summary

Hardware Resources

Components

Software Environment

Internet Settings

Office 2003 Applications

Item	Value
OS Name	Microsoft Windows XP Professional
Version	5.1.2600 Service Pack 2 Build 2600
OS Manufacturer	Microsoft Corporation
System Name	LAW98
System Manufacturer	Dell Inc.
System Model	Latitude D820
System Type	X86-based PC
Processor	x86 Family 6 Model 14 Stepping 8 GenuineIntel ~2161 Mhz
Processor	x86 Family 6 Model 14 Stepping 8 GenuineIntel ~2161 Mhz
BIOS Version/Date	Dell Inc. A03, 28/08/2006
SMBIOS Version	2.4
Windows Directory	C:\WINDOWS
System Directory	C:\WINDOWS\system32
Boot Device	\Device\HarddiskVolume2
Locale	United States
Hardware Abstraction Layer	Version = "5.1.2600.2705 (xpsp.050622-1524)"
User Name	CENTRAL\price
Time Zone	GMT Standard Time
Total Physical Memory	2,048.00 MB
Available Physical Memory	922.94 MB
Total Virtual Memory	2.00 GB
Available Virtual Memory	1.96 GB
Page File Space	4.85 GB
Page File	C:\pagefile.sys

Find what:

Find

Close Find

☐ Search selected category only

☐ Search category names only

Another way

C:\ C:\WINDOWS\system32\cmd.exe - systeminfo

Microsoft Windows XP [Version 5.1.2600]
(C) Copyright 1985-2001 Microsoft Corp.

C:\Documents and Settings\price>systeminfo
Loading Network card Information ...

That's too much info

- `systeminfo > test.txt`
- `notepad test.txt`

test.txt - Notepad

File Edit Format View Help

```
Host Name:                LAW98
OS Name:                  Microsoft windows XP Professional
OS Version:              5.1.2600 Service Pack 2 Build 2600
OS Manufacturer:        Microsoft Corporation
OS Configuration:       Member workstation
OS Build Type:            Multiprocessor Free
Registered Owner:        Steve
Registered Organization:
Product ID:               76487-OEM-0011903-00102
Original Install Date:    23/10/2006, 16:30:25
System Up Time:           6 Days, 2 Hours, 49 Minutes, 29 Seconds
System Manufacturer:      Dell Inc.
System Model:             Latitude D820
System type:              X86-based PC
Processor(s):             2 Processor(s) Installed.
                          [01]: x86 Family 6 Model 14 Stepping 8 GenuineIntel ~2161 Mhz
                          [02]: x86 Family 6 Model 14 Stepping 8 GenuineIntel ~2161 Mhz
BIOS Version:             DELL - 27d6081c
Windows Directory:        C:\WINDOWS
System Directory:         C:\WINDOWS\system32
Boot Device:              \Device\HarddiskVolume2
System Locale:             en-us;English (United States)
Input Locale:             en-ie;English (Ireland)
Time Zone:                (GMT) Greenwich Mean Time : Dublin, Edinburgh, Lisbon, London
Total Physical Memory:    2,046 MB
Available Physical Memory: 883 MB
Virtual Memory: Max Size: 2,048 MB
Virtual Memory: Available: 2,007 MB
Virtual Memory: In Use:   41 MB
Page File Location(s):    C:\pagefile.sys
Domain:                   msexchange.ucc.ie
Logon Server:             \\W2K8-CENTRAL-DC
```

test.txt - Notepad

File Edit Format View Help

```
Hotfix(s):                453 Hotfix(s) Installed.  
[01]: File 1  
[02]: File 1  
[03]: File 1  
[04]: File 1  
[05]: File 1  
[06]: File 1  
[07]: File 1  
[08]: File 1  
[09]: File 1  
[10]: File 1  
[11]: File 1  
[12]: File 1  
[13]: File 1  
[14]: File 1  
[15]: File 1  
[16]: File 1  
[17]: File 1  
[18]: File 1  
[19]: File 1  
[20]: File 1  
[21]: File 1  
[22]: File 1  
[23]: File 1  
[24]: File 1  
[25]: File 1  
[26]: File 1  
[27]: File 1  
[28]: File 1  
[29]: File 1  
[30]: File 1  
[31]: File 1  
[32]: File 1
```

```
test.txt - Notepad
File Edit Format View Help

[247]: KB942615-IE7 - Update
[248]: KB944533-IE7 - Update
[249]: KB947864-IE7 - Update
[250]: KB956390-IE7 - Update
[251]: KB960714-IE7 - Update
[252]: KB961260-IE7 - Update
[253]: KB963027-IE7 - Update
[254]: KB969897-IE7 - Update
[255]: KB972260-IE7 - Update
[256]: KB974455-IE7 - Update
[257]: KB976325-IE7 - Update
[258]: KB978207-IE7 - Update
[259]: MSCompPackv1 - Update
[260]: KB873339 - Update
[261]: KB885250 - Update
[262]: KB885835 - Up

Network Card(s): 3 NIC(s) Installed.
[01]: Intel(R) PRO/wireless 3945ABG Network Connection
      Connection Name: wireless Network Connection
      Status: Media disconnected
[02]: Broadcom NetXtreme 57xx Gigabit Controller
      Connection Name: Local Area Connection
      DHCP Enabled: Yes
      DHCP Server: 255.255.255.255
      IP address(es)
      [01]: 143.239.143.98
[03]: 1394 Net Adapter
      Connection Name: 1394 Connection
      DHCP Enabled: Yes
      DHCP Server: N/A
      IP address(es)
```

<http://support.microsoft.com/kb/300887>

Give you exactly the same info for
XP

What is an IRQ?

- Short for Interrupt request, IRQ is a signal that has a direct line to the computer processor, allowing it to stop the processor momentarily and decide what to do next. Every IBM compatible computer has a maximum of 15 IRQs and are prioritized in the computer according to the importance of the device.

What is an I/O?

- Input Output (I/O) represents the locations in memory that are designated by use of various devices to exchange information amongst themselves and the rest of the PC.

What is a DMA?

- DMA, or Direct Memory Access, are pathways provided by the hardware to allow the hardware direct access to the computer's memory.

More info on: <http://www.computerhope.com/irqs.htm#irqlist>